



AUTHOR: ANDREW BAINBRIDGE
ADVICE/CONTRIBUTIONS BY: KEVIN OATES, BARNEY HAWKINS, PETER HOARE
ISSUE: VERSION 7 (29th March 2023)



REGATTA CREW BRIEFING

JUNE 2023

WELCOME TO THE EVENT FROM HEXHAM RC ORGANISING COMMITTEE

Welcome to all new and returning competitors to this years event

Please take note:

- 1. Be prepared to boat on time**
- 2. Help us to help you keep safe at all times**
- 3. Show consideration and courtesy to all fellow competitors**

REMEMBER TO STAY SAFE

&

HAVE A GREAT DAY!

KEY CLUB CONTACTS

CHAIR: BARNEY HAWKINS
CONTACT: hexhamregatta.tynegreen@yahoo.com

CHAIR OF RACE COMMITTEE: PETER
HOARE
CONTACT: peter.hoare63@gmail.com

HRC SAFETY OFFICER: ANDREW
BAINBRIDGE
CONTACT: hexhamregatta.tynegreen@yahoo.com

REGATTA SECRETARY: CATHERINE
BOWMAN
CONTACT: hexhamregatta.tynegreen@yahoo.com

REGIONAL SAFETY ADVISOR: JOHN
MULHOLLAND
CONTACT: john.rrsa@jdmulholland.plus.com

www.hexhamrc.co.uk

WHEN YOU ARRIVE

- Cars to be parked in normal Tyne Green Parking Spaces, see red arrow.
- This is public access and car park so may fill up quite quick.
- Visitors can also park at the Wentworth centre but will require a £1 display disc



- Towing vehicles and trailers only permitted to park on Tyne Green.
- A parking area will be allocated for each trailer on arrival.
- No cars, other than essential towing vehicle's are permitted on Tyne Green trailer area.

MARSHALS AND THEIR ROLE



Club Marshals will be wearing high-vis jackets as illustrated.

Hexham RC volunteers will be predominantly be found in the white tents, landing stage area, and clubhouse.

Our aim for the event is to ensure safe, on-time, fair and enjoyable races.

If in doubt with regards to anything on the day, please don't hesitate to ask a marshal or Hexham volunteer for advice/help.



www.hexhamrc.co.uk



UMPIRES AND THEIR ROLE



Umpires will be wearing high-vis jackets as illustrated. They will be located at the stations on the south bankside as indicated on the circulation pattern map.

Umpires control all aspects with regards to the race and have the authority to issue official warnings to competitors or disqualify crews from the race if an infringement of the regatta race rules has been broken.

PLEASE follow all instructions given by umpires at all times while on the water, before, during and after the race.

If crews/competitors abuse any other competitors or officials, umpires have the right to issue an official warning or disqualify crews from the race.



BRITISHROWING

www.hexhamrc.co.uk


HEXHAM
ROWING CLUB

GENERAL RIVER SAFETY

Red Seal Rescue will be on hand for all three divisions in case any competitors capsize or get into difficulty

They will be located on the river.

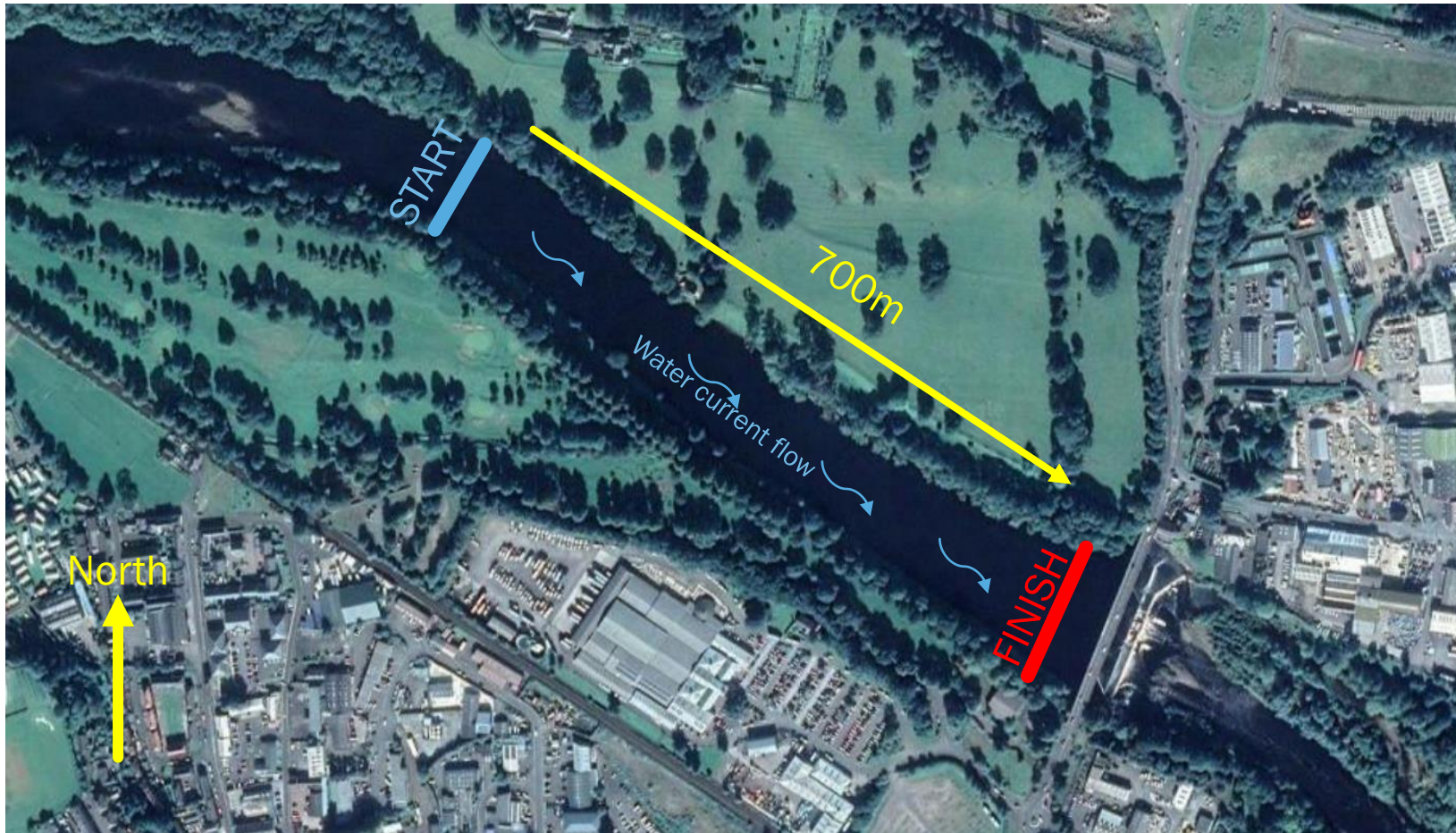
PLEASE take all necessary precautions on the river to remain safe.

If you become aware of any unsafe actions please inform an umpire or race control at the earliest opportunity so action can be taken.

Marshals/umpires and Hexham RC volunteers will be bankside to also keep an eye on all proceedings during the event.



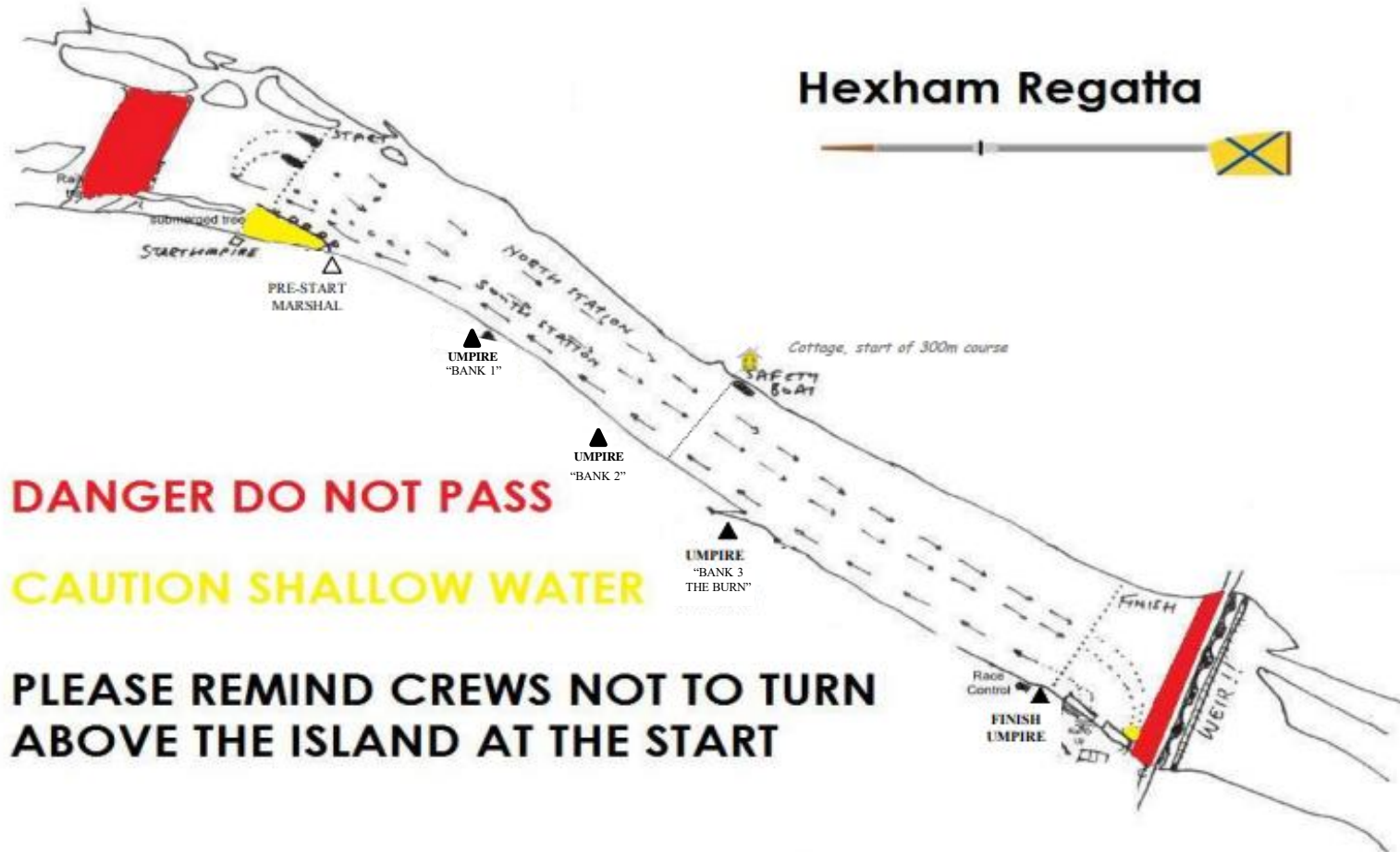
THE COURSE – MAP OVERVIEW



- Hexham Regatta course length is 700m
- The course comprises one wide downstream racing lane with two stations NORTH (far side) & SOUTH (Tyne Green / Boathouse side)
- An upstream lane on the south side permits competing crews to row to the start. This lane will be buoyed all the way to the start.
- Marshals and Umpires will be positioned up the length of the course on the south side of the river.

CIRCULATION PATTERN REVIEW

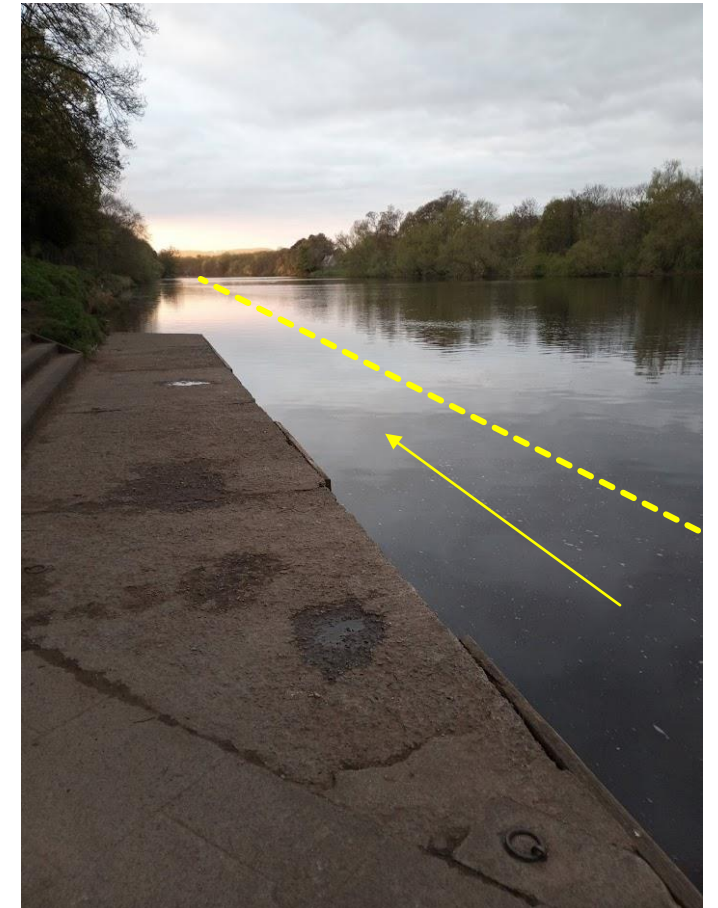
KEY POINTS



- Please review and adhere to the circulation pattern shown on this slide.
- As stated, competitors will row up in the Marshalling lane illustrated by arrows going upstream. This will be buoyed off from the racing lanes.
- The start is shown at the top, just before the pebbled island. Please note this area is shallow and boats should not go beyond the roped off areas.
- Racing is split into 2 lanes, and crews will queue upstream of their allotted lane.
- Please remain in your racing lane all the way down to the finish line.
- The cottage indicates the halfway point of the race.
- Finish line is indicated by a white board on the North Bank (in the trees) and notified by a blast on the air horn.
- PLEASE FOLLOW all instructions by bankside marshals and umpires.
- No one other than umpires/regatta officials should be using any sort of electrical equipment to communicate to crews from bankside

RACING: CREWS ENTERING THE RIVER

- This is the entry point for competing boats
- **Please arrive 5mins before boating time with your opposition.**
- A one way system will be in operation.
- PLEASE BE AWARE of carrying boats down these steps to landing as they can be steep and may be wet.

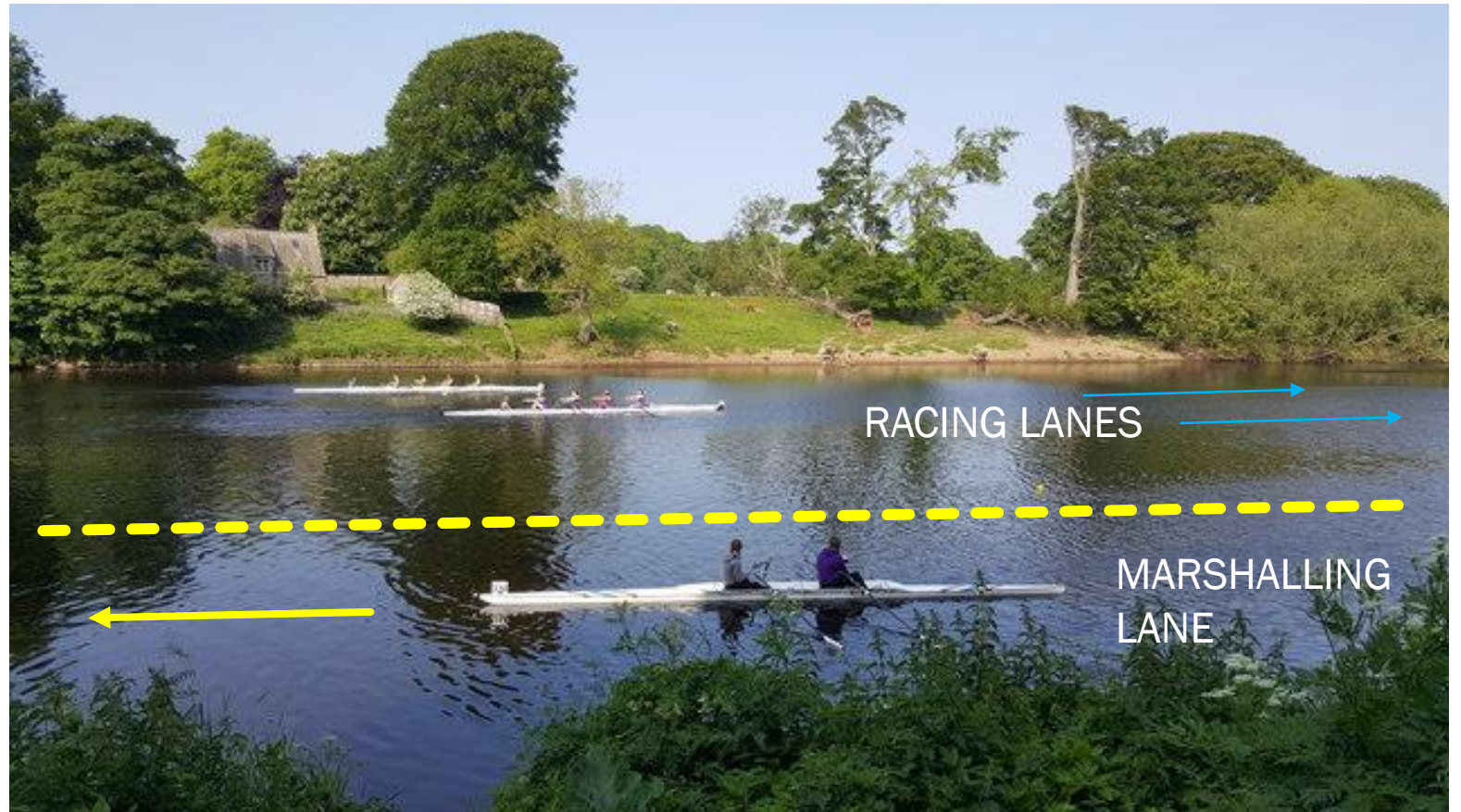


- Club members will be on hand to help competitors into boats.
- PLEASE ENSURE all gates are unlocked and boat shoes have been checked by the umpires before reaching the landing stage.
- Shoes/Wellies must be kept off the landing stage and either taken away or taken on the boats. These can be left on bankside hill for collection.
- Crews must be ready to boat and push off into marshalling lane as quickly as possible – **with their opposition.**
- Boats must be placed in river with bows facing upstream.

RACING: HEADING UP TO START

KEY POINTS

- On the way upstream, please keep in the MARSHALLING LANE, which will be buoyed.
- Please be aware of other competitors coming downstream.
- FOLLOW all instructions given by the bankside marshals or umpires, non-compliance with instruction may result in an official warning or disqualification.
- Competitors must **keep with their race opposition** on the way up to start position.
- **PLEASE NOTE** the Marshalling lane may be shallow with weeds so keep some distance from the side of the river but do not cross beyond the buoyed line into the racing line.
- **PLEASE NOTE**, late arrivals at the start position may be disqualified.



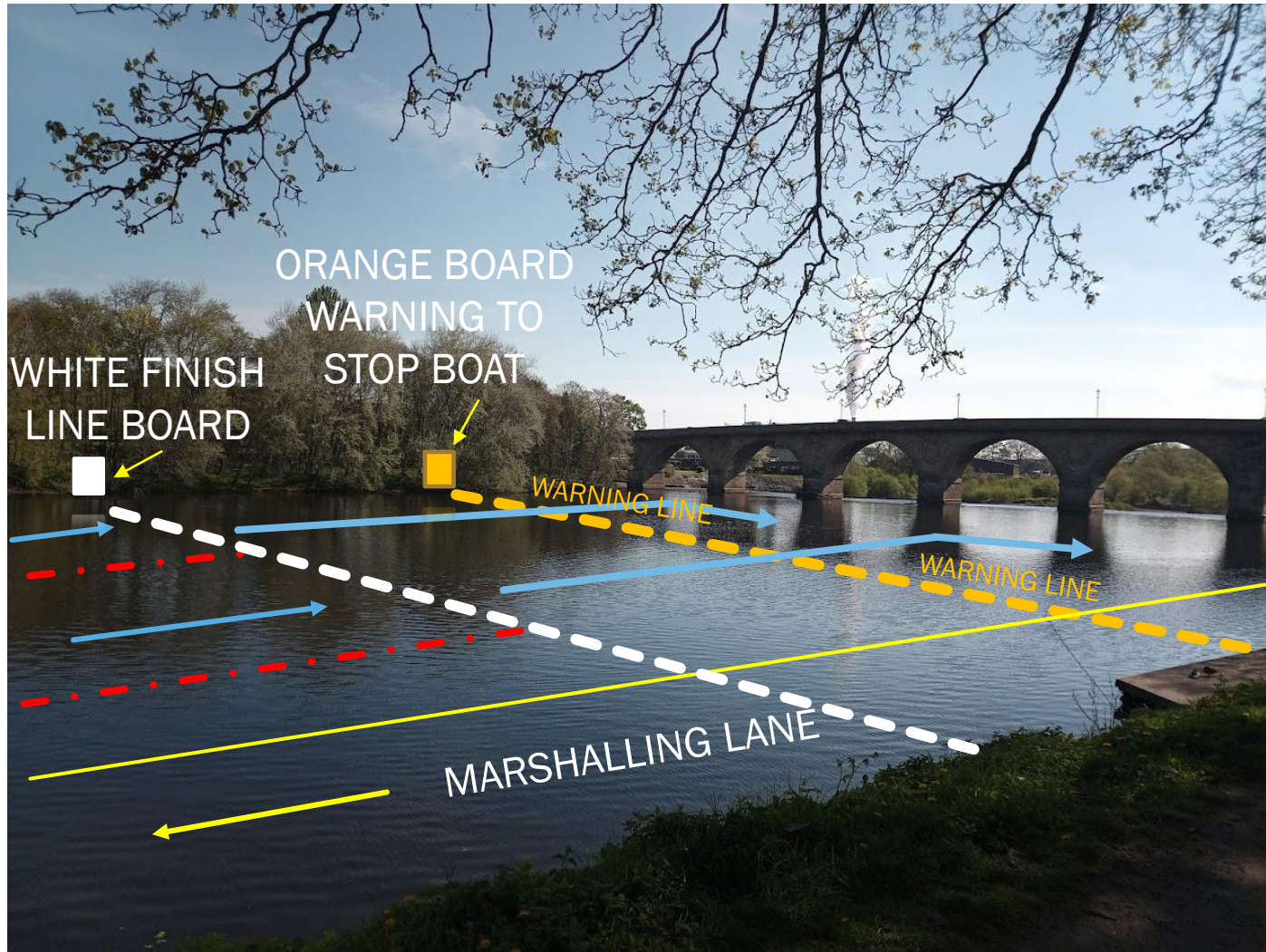
RACING: RACE STARTS



KEY POINTS

- The Racing will comprise two lanes, NORTH LANE (far side of river) and SOUTH LANE (boathouse side of river).
- PLEASE keep to your designated race lane.
- DO NOT STRAY from your lane and especially not into the MARSHALLING LANE.
- FOLLOW all instructions given by the umpires.
- The cottage on the far side of the river indicates the relative half-way point of the course.

RACING: FINISHING LINE



KEY POINTS

- The white board on the NORTH BANK (far side of river), indicates the FINISH LINE.
- The orange board on the NORTH BANK, indicated warning line to stop the boat promptly.
- Once past the finish line, stop and turn towards the bottom landing.
- PLEASE BE quick when turning as other races will be coming straight after, and so the quicker crews can get to the bottom landing, the less chance of build up of boats near the bridge.
- PLEASE keep your distance from the bridge, the water is shallow so boats can get damaged and also the weir on other side is dangerous.
- You should give yourself enough time to come to a complete stop and turn.
- Race results will be recorded by Hexham Regatta club members in the white tent following the race completion.
- In the event of a dead heat or other issues, competitors will be asked to race again. LISTEN AND FOLLOW ALL instructions by umpires at the finish.
- If the race is to be re-run – please follow the one way system and re-join the MARSHALLING LANE without entering the racing lanes.
- Bankside spectators/coaches should not loiter on the landing or near the finish which would impede regatta officials/umpires.

IMPORTANT WARNING: HEXHAM FINISH WEIR



PLEASE NOTE: This is just on the other side of Hexham Bridge.

Crews will need to **HOLD BOATS UP PROMPTLY TO A STOP** once past the FINISH LINE as indicated by a blast on the airhorn to avoid drifting over weir.

90 degree bow turn once boat has stopped and head to exit/landing stage where you will be helped to disembark as quick as possible.

RACE END: LANDING THE BOATS AND GETTING ONSHORE



KEY POINTS

- Once past the FINISH LINE, quickly turn and head to bottom landing stage.
- All boats must land with bows facing upstream (see image on the left).
- Club members will be on hand to help competitors disembark.
- All blades will be placed on the adjacent bank to the bottom landing for collection after competitors have disembarked and moved their boat off the bottom landing.
- Please follow the one-way system up the landing ramp to take boats back to trailers as indicated on the right.
- PLEASE be as quick as possible when disembarking.
- This will help maintain the flow of competitors and ensure the timely turnaround of races.



GENERAL RACE INFORMATION, RESULTS AND MEDALS

- All race information and order/results will be found on the day within the accessible white tent on the bankside near the clubhouse.
- Club members will be on-hand within the tent to answer all queries.
- PLEASE do not enter/interrupt the race control tent which faces the river.
- Race numbers for boats will be given out from the accessible white tent on the bankside.
- Please note the table below showing the race order for the day. Competitors individual boating times will be available in the white information tent and online when the final race order has been confirmed.
- The days racing results will be logged throughout the day and will be accessible live online with the “easyregatta app”.
- Once race category finals have been completed, medals for all the winning crew can be collected from the white information tent by one member of the winning crew.

	Division 1 08:30 – 11:30	Division 2 12:00 – 15:00	Division 3 15:30 – 18:30
8+	J18, J17, J16 Open	Women OMas, WMas	WJ18, WJ17, WJ16 Mx
4+	WJ18, WJ17, WJ16 Women, WMas	Open	J18, J17, J16 OMas
4-	WMas	Open	Women OMas
4x-	WJ18, WJ17, WJ16 OMas	Women WMas	J18, J17, J16 Open, Mx
4x+	J15, J13	J14, WJ15, WJ13	WJ14
2-	Open		Women
2x	J18, J16, J14 Mx, WMas	WJ18, WJ16, WJ14 Women	J17, J15, WJ17, WJ15 Open, OMas
1x	WJ18, WJ16 Women	J17, J15, WJ17, WJ15 OMas	J18, J16 Open WMas

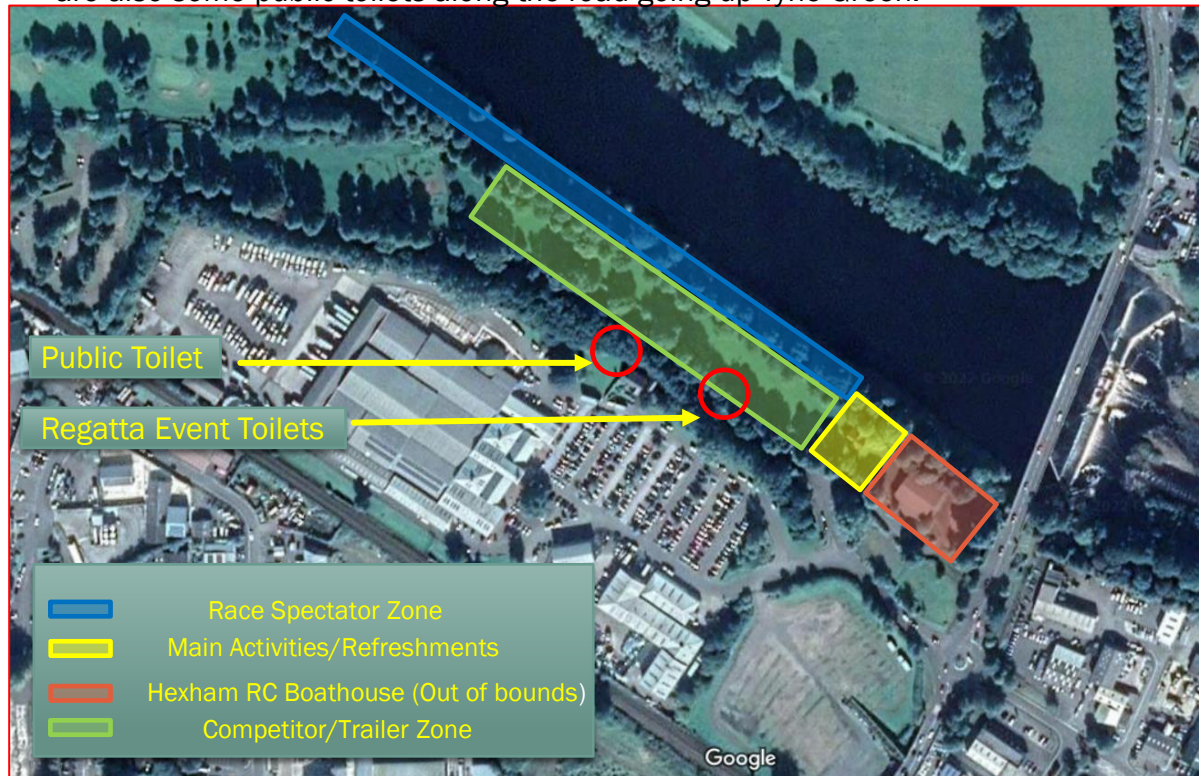


www.hexhamrc.co.uk



REFRESHMENTS AND FACILITIES

- See below map indicating the areas at Hexham Regatta.
- Race commentary will be available along the Spectator zone via a speaker system throughout the event.
- Any important information will also be communicated via the speakers.
- Refreshments such as hot/cold food will be available throughout the day near the clubhouse (shown in yellow)
- The large brown boatshed is out of bounds to competitors (other than Hexham RC and QE High School Rowing Club).
- Portable toilet facilities will be available on Tyne Green for use by competitors. There are also some public toilets along the road going up Tyne Green.



- First aid will be on hand at Hexham Regatta, if anybody needs to report a serious/urgent medical issue please report to your nearest marshal or Hexham RC club member – if not then report all issues at the white information tents.

BIG THANK FROM HEXHAM REGATTA

A Big Thank You to:

- All competitors, coaches, supporters who are coming to the Regatta.
- To all the umpires, marshals and volunteers for their support and time throughout the day, it is much appreciated by everyone at Hexham Rowing Club.



THANKS FOR COMING AND WE LOOK FORWARD TO YOUR PARTICIPATION AT HEXHAM REGATTA